



THERMOFLEX®

Oil & Water Flow Line
OMV - PETROM Romania



**Installs
10 times
faster than
steel pipe!**





THE M OF LEX[®]

Oil & Water Flow Line
OMV - PETROM Romania



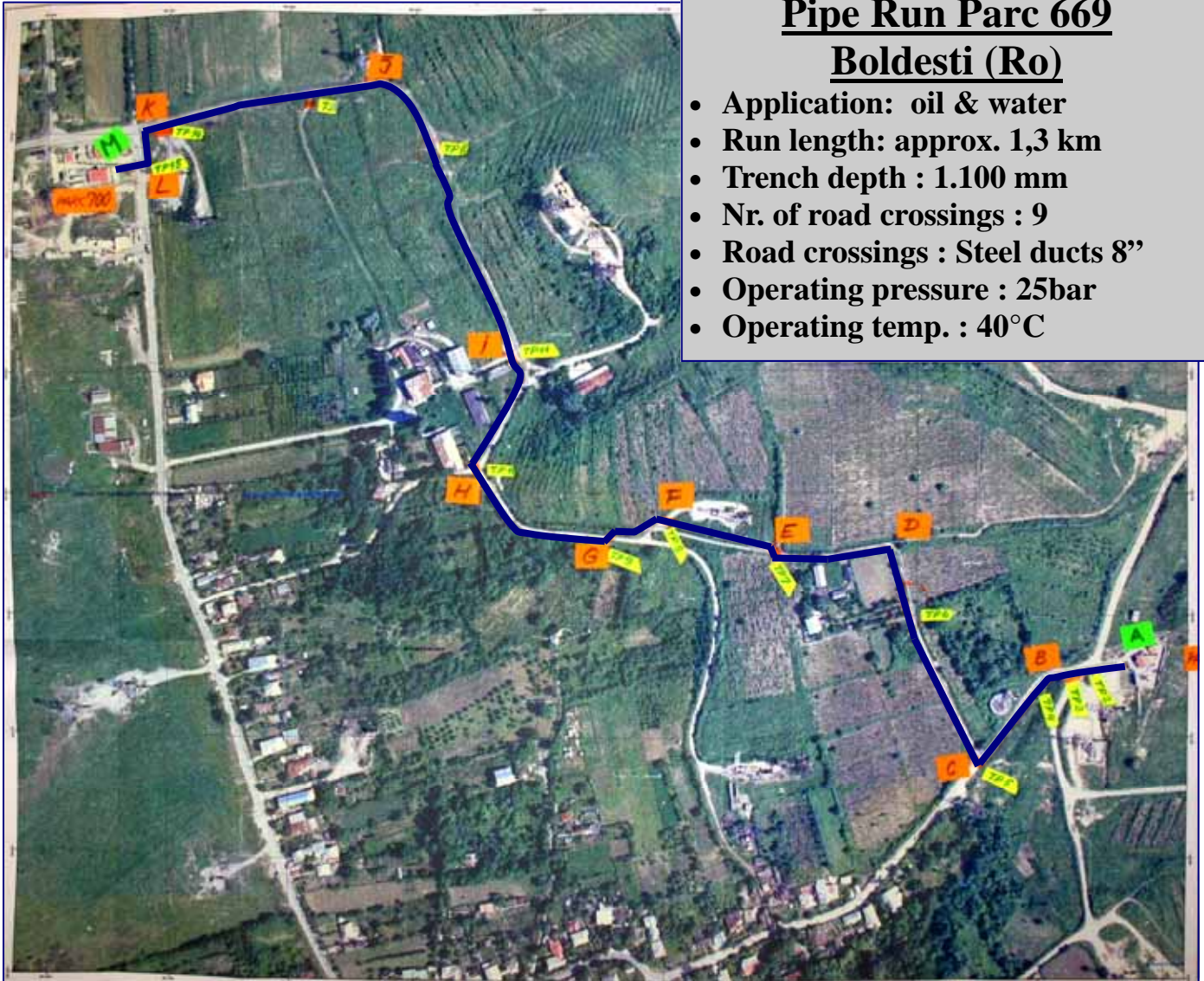
Pipes are jointed with a jointless splice coupling that is field swaged using a pneumatic swaging machine. Splice couplings have no threads nor gaskets guarantying perfect tightness. The pipe's end couplings are stub flange style for easy connection to the equipment. A trained contractor performs the swaging of a coupling in less than 15 minutes.





THERMOFLEX®

Spoolable, re-reinforced thermoplastic Pipes at
OMV - PETROM Romania



Pipe Run Parc 669 Boldesti (Ro)

- Application: oil & water
- Run length: approx. 1,3 km
- Trench depth : 1.100 mm
- Nr. of road crossings : 9
- Road crossings : Steel ducts 8"
- Operating pressure : 25bar
- Operating temp. : 40°C

- Thermoflex® Pipe :
 - O.D. 2 3/8"
 - Construction : PPS (Fortron) liner, Aramid fiber braid, PP outer jacket
 - Rated pressure : 500ps - 34bar
 - Rated temp. : 65°C
- Thermoflex® Couplings :
 - Material : Zinc Chromate Plated Carbon Steel, internally coated with PPS
 - Field swaged with Polyflow pneumatic machine
 - Coupling style : Jointless Splice couplings in the pipe run
Stub flange couplings at line ends
- Installation time of pipe and couplings is 10 times faster than with steel pipes